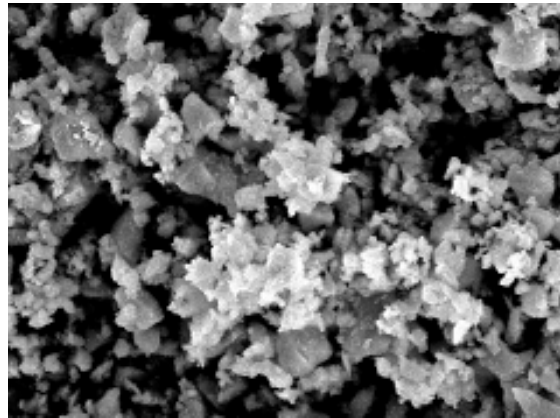


SIBELITE® M3500 is a high-purity silica produced from cristobalite by iron-free grinding and accurate sieving by means of air-separators.

A controlled particle size distribution, the excellent optical properties, chemical inertness and low oil absorption lead to benefits in paints, plastics, compound stone, ...

CHEMICAL ANALYSIS (XRF) %

SiO ₂	99.5
Fe ₂ O ₃	0.03
Al ₂ O ₃	0.20
TiO ₂	0.02
K ₂ O	0.05
CaO	0.01



GRANULOMETRIC DATA AND PHYSICAL CHARACTERISTICS

			Method
control-sieve > 40 µm	max. 0.03	%	Alpine
D10	2.5	µm	Malvern MS 2000
D50	10	µm	Malvern MS 2000
D90	30	µm	Malvern MS 2000

TDS.03.05.38 2009-05-25 1/2

SIBELITE® M3500

Technical Data

density	2.3	kg/dm ³	
specific surface	9000	cm ² /g	Blaine
oil absorption	26	g/100 g	
hardness	6.5	Mohs	
pH	9		
moisture	0.15	%	
loss on ignition	< 0.01	%	
colour	L* 98 a* 0.03 b* 0.40		Minolta CM-3610d D65/10°
refractive index n _D	1.48		



The above given information is based on mean values. The typical properties and chemical analyses are intended as examples and are not to be considered as substitutes for actual testing and analyses in those situations where properties and chemical compositions are critical factors.
Sales and supplies will always be according to our general sales conditions.

CAS-Nr.: 14464-46-1

EINECS-Nr.: 238-455-4

MSDS available on request

ed.03

TDS.03.05.38 2010-03-19 2/2